



# Legendfires

Product Catalogue 2021/2022



Legendfires

ETHOS  
The spirit of passion

GARDEN  
cube

**Quality, style and choice are our hallmarks and we only supply dedicated fireplace retailers who can offer you a similar service.**

At Legend, we understand that everyone is individual. We have designed our products to be as bespoke to the individual as possible. A vast selection of control, frame and fuel bed options are available and are featured in this brochure making the Legend Fires range of products one of the most versatile on the market today.

**The Ethos range from Legend Fires just cannot be ignored. Ethos, the spirit of difference.**

Stunning looks, stylishly sophisticated and performance that sets new standards, Ethos from Legend Fires promises to be more admired than anything else around.

Rich and understatedly opulent with a sophisticated exterior, The Ethos is designed to be noticed and built to last. And in true Legend Fires tradition, the Ethos range has once again raised the bar for efficiency, performance and style.

**The warmth of the real flames exudes from all 4 sides of Garden Cube providing the perfect outdoor environment.**

Featuring a superb contemporary glass encased cabinet with extended chimney for added comfort Garden Cube allows you to enjoy your garden or outdoor space to the full and is the perfect way to spend a Summer's evening.

And an ingenious ash collection tray ensures there's no mess so you can spend more time relaxing and living the good life.



Quality, style and choice  
are our hallmarks.

**Legend Fires was established in 1996 and have become one of the leading names in the development and manufacture of living flame gas appliances.**

Situated close to the Ribble Valley, an area of outstanding natural beauty, Legend has an unrivalled manufacturing and service reputation in the gas appliance industry. Quality, style and choice is our 'ethos' and we only supply dedicated fireplace retailers who can offer you a similar service. At Legend, we understand that everyone is individual. We have designed our products to be as bespoke to the individual as possible.

"A vast selection of control, frame and fuel options are available and are featured in the website making the Legend Fires range of products one of the most versatile on the market today. We strongly believe our responsibility to our product does not end once it has left our factory. At Legend, we pride ourselves on our after sales and customer support, we firmly believe that this support, is the best in the industry. If you have any technical enquiries with regard to any of our products and services, please feel free to call our sales team, who will be willing and able to answer your questions."

John Stone and Susan Calvert  
Directors

## Contents

Ethos Landscape	4-5
Ethos Portrait	6-7
Ethos Super Portrait	8-9
Ethos 550	10-11
Ethos 400	12-13
Ethos 3s	14-15
Ethos 400 Stove	16-17
Inspiration	18-19
Vantage	20-21
Vantage 4-sided	22-23
Virage	24-25
Virage 4-sided	22-23
Spirit	28-29
Spirit Superslim	30-31
Evora	32-33
Evora 4-sided	34-35
Wraith	36-37
The Garden Cube	38-39
Technical Spec	40-45

# Options

## CONTROL OPTIONS



remote

## FUEL BEDS



logs



split logs

## FRAMES



profile satin



profile bronze



profile black



frameless edge kit



landscape black



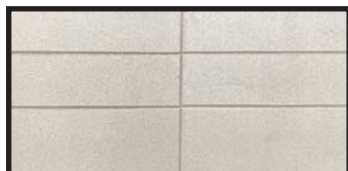
nickel

## ACCESSORIES

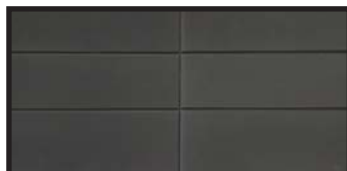


mains adaptor

## INTERIORS



natural



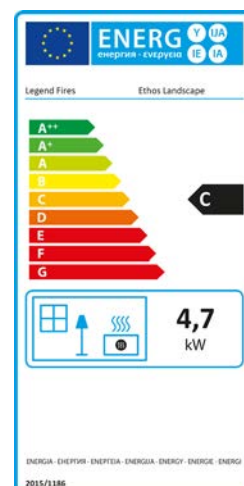
black



rustic brick



black glass





# Ethos Landscape

Suitable for hole-in-the-wall or some fireplace settings, the 750 Landscape combines a class leading efficiency of 87.2% with stylish looks and fantastic performance. Remote control is standard and the 750 Landscape can be fitted with a wide choice of frames or slips. High definition, detailed logs are as standard. Please ask your Legend Ethos dealer for details.



Ethos Landscape//Black Glass Interior//Logs//Fireplace Installation

# Options

## CONTROL OPTIONS



remote

## FUEL BEDS

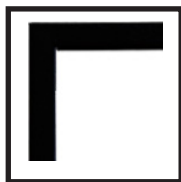


logs



split logs

## FRAMES



frameless edge kit



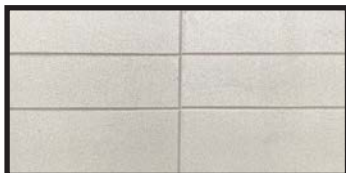
flat black

## ACCESSORIES

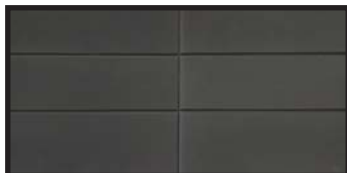


mains adaptor

## INTERIORS



natural



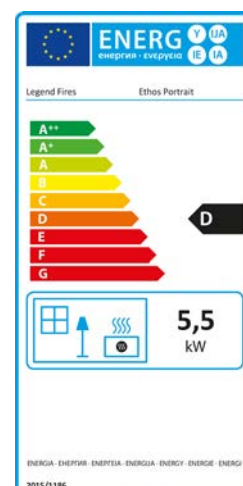
black



rustic brick



black glass





## Ethos Portrait

Suitable for hole-in-the-wall or some fireplace settings, the 750 portrait is a versatile high efficiency appliance manufactured to the highest specification. An industry leading efficiency of 82.3%, combined with the meticulous manufacturing process, means the Ethos 750 is your perfect choice for contemporary or traditional inspired projects. Remote control and high definition, detailed logs are standard.



Ethos Portrait//Brick Interior//Split Logs//Fireplace Installation

# Options

## CONTROL OPTIONS



remote

## FUEL BEDS



logs



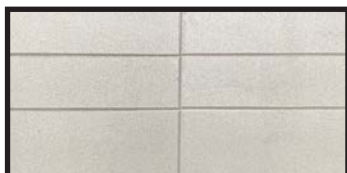
split logs

## ACCESSORIES

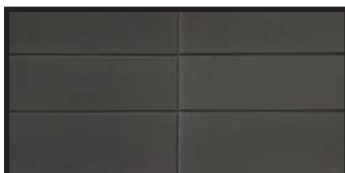


mains adaptor

## INTERIORS



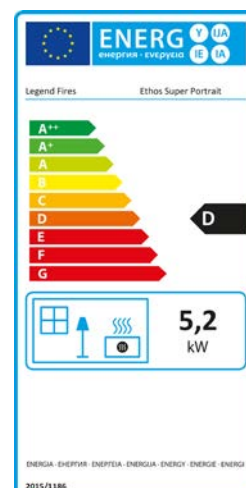
natural



black



black glass





# Ethos Super Portrait

Ethos 750 Super Portrait offers a grand but seductive vibe. It's domineering scale and superb lines reinforce the Ethos values. Industry leading efficiency of 78% confirms Ethos 750 Super Portrait as design par excellence.

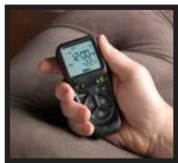
Ethos Super Portrait is guaranteed to beautify any contemporary or traditional inspired project.



Ethos Super Portrait//Black Interior//Logs//Fireplace Installation

# Options

## CONTROL OPTIONS



remote

## FUEL BEDS

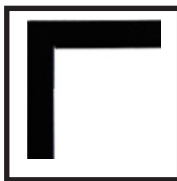


logs

## FRAMES



profile black



frameless edge kit



landscape black

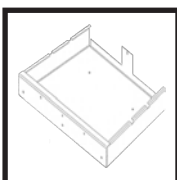


nickel

## ACCESSORIES

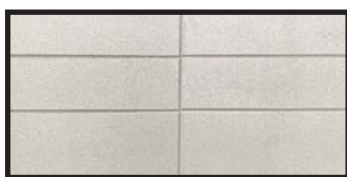


mains adaptor

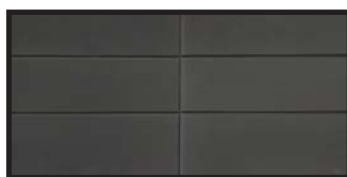


hearth mounting kit

## INTERIORS



natural



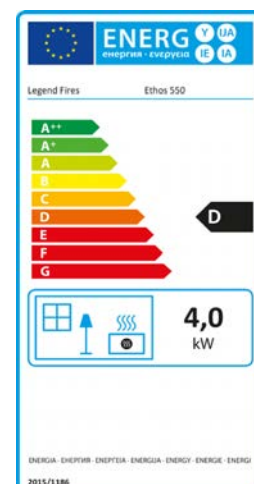
black



rustic brick



black glass



## Ethos 550

Manufactured and tested to a very high standard, the Ethos 550 is a fantastically versatile appliance that would suit most fireplace or hole-in-the-wall applications. Rated at 80.6% the Ethos 550 is a very high performance appliance with fully sequential remote control as standard. There are a wide range of frame options available to suit all decors, please ask your Legend Ethos stockist for more details.



Ethos 550//Black Glass Interior//Logs//Fireplace Installation



# Options

## CONTROL OPTIONS



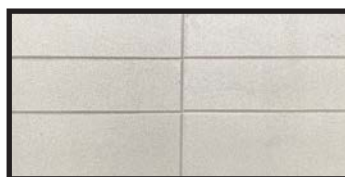
remote

## FUEL BEDS

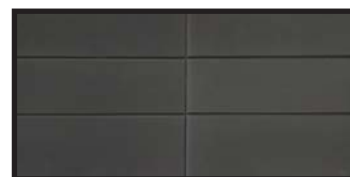


logs

## INTERIORS



natural



black

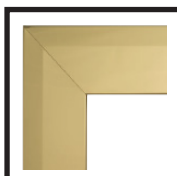


black glass



rustic brick

## FRAMES



brass



chrome



brushed



black



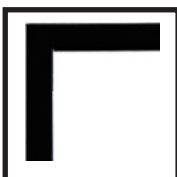
black/nickel



black/brass



black/chrome



frameless edge kit



flat black

## FRETS



aviva brass



aviva chrome



aviva black



aviva brushed



aviva black nickel



duet brass



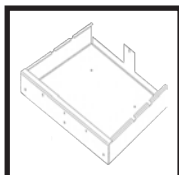
duet chrome

other frets available on request

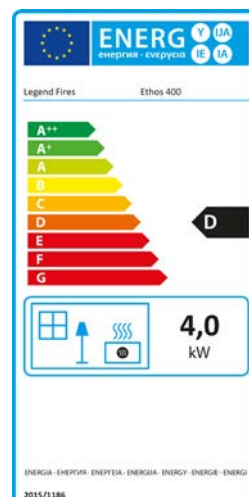
## ACCESSORIES



mains adaptor



hearth mounting kit





## Ethos 400

The designer label for exquisite fires. Alluring, visually stunning and a unique creative vision are the hallmarks of Ethos from Legend Fires 400 continues in this tradition. Ethos is rated at 81% efficient - indulge your senses.



Ethos 400//Natural Interior//Logs//Chrome Frame//Chrome Aviva

# Options

## CONTROL OPTIONS



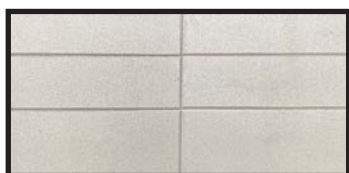
remote

## FUEL BEDS

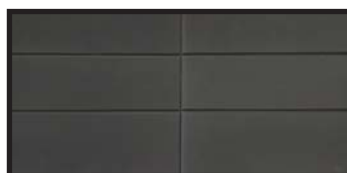


logs

## INTERIORS



natural

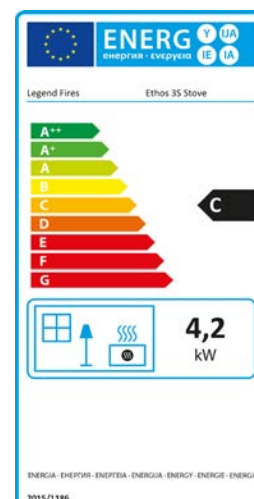


black

## ACCESSORIES



mains adaptor



## Ethos 3S

A superb blend of design flair and engineering excellence is in abundance with Ethos 3S. This 3 sided natural gas glass stove has been manufactured to exacting standards and is available with a choice of interiors. Setting new standards in efficiency Ethos 3S comes in at 84% and will suit both fireplace and free standing settings. A fully sequential system provides performance at the touch of a button and completes the picture of excellence.



Ethos 3s//Natural Interior//Logs

# Options

## CONTROL OPTIONS



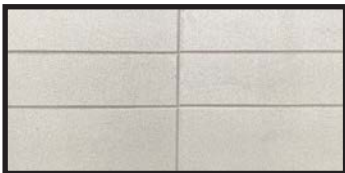
remote

## FUEL BEDS

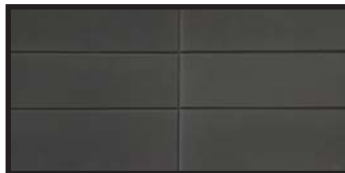


logs

## INTERIORS



natural



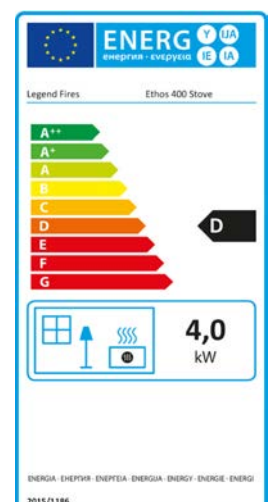
black



black glass



rustic brick





# Ethos 400

Complete with optional log store, the Ethos 400 Stove is both beautiful and functional combining the hallmarks of Ethos design, engineering excellence and dedication to providing the very best. Quite simply the Ethos 400 won't disappoint. With an efficiency rating of 81%, available as a free standing option with a choice of interiors this natural gas stove ticks all the boxes. With stunning good looks guaranteed Ethos 400 sits comfortably in a fireplace or freestanding setting. It comes complete with full sequential remote control so you can sit back and enjoy. Ethos 400 is suitable for flue type Class 1 or 2 and will fit into a 5 inch twinwall or 7 inch copex.



Ethos 400 Stove//Natural Interior//Logs//Log Store







# Options

## CONTROL OPTIONS



manual



slide\*



remote\*

## INTERIORS



plain



ribbed\*



brick\*

## FUEL BEDS



coal\*



pebble\*



ripped coal\*



modular coal



modular pebble\*



deluxe pebble\*



driftwood\*



logs\*

## FRAMES



brass



chrome



brushed



black



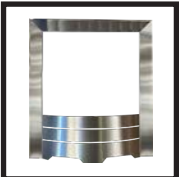
black/nickel\*



black/brass\*



black/chrome\*



v2 brushed\*



v2 black\*



v2 chrome\*



v2 black nickel\*



profile satin\*



profile bronze\*



profile brass\*

## FRETS



aviva brass



aviva chrome



aviva black



aviva brushed\*



aviva black nickel\*



duet brass\*



duet chrome\*

other frets avialble on request



# Vantage

The Legend Vantage is our best selling fire, it has become an industry 'Legend', often copied but never equalled.

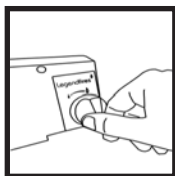
Vantage can be specified with several fuel bed and frame options making it equally at home in traditional or more contemporary homes. Vantage comes in various sizes including 16", 18", 2" or even low lintel variants. Please ask your Legend stockist for details.



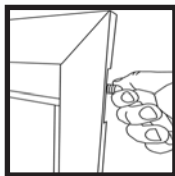
Vantage//Logs//Black Frame//Black Aviva

# Options

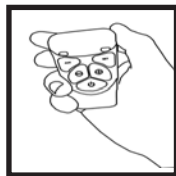
## CONTROL OPTIONS



manual



slide



remote

## INTERIORS



plain



ribbed



brick

## FUEL BEDS



coal



pebble



ripped coal



modular coal



modular pebble



deluxe pebble



driftwood



logs

## FRAMES



chrome



brushed



black



profile satin



profile bronze



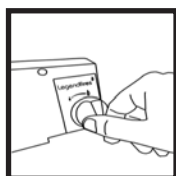
profile brass



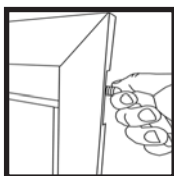
Vantage 4-sided//Pebbles//Brushed Frame

# Options

## CONTROL OPTIONS



manual



slide



remote

## INTERIORS

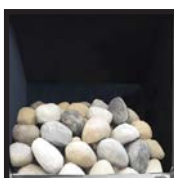


plain

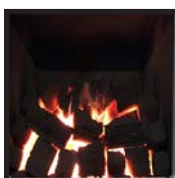
## FUEL BEDS



coal



pebble



ripped coal



modular coal

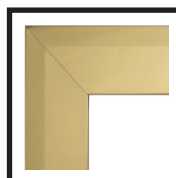


modular pebble



deluxe pebble

## FRAMES



brass



chrome



brushed



black



black/nickel



black/brass



black/chrome



v2 brushed



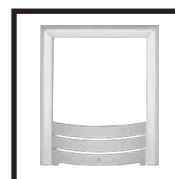
v2 black



v2 chrome



v2 black nickel



profile satin



profile bronze



profile brass

## FRETS



aviva brass



aviva chrome



aviva black



aviva brushed



aviva black nickel

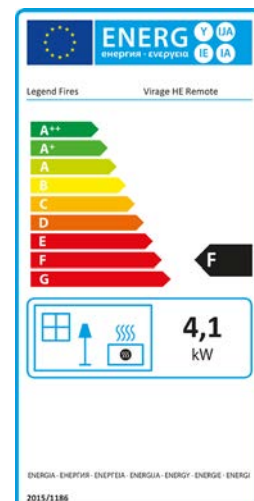
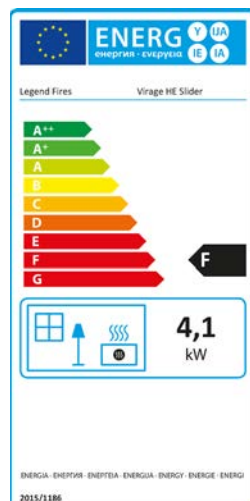
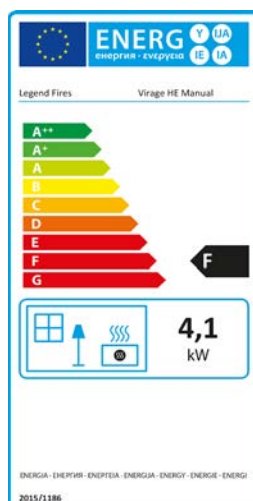


duet brass



duet chrome

other frets available on request





# Virage

The Legend Virage has been developed to provide superb flame picture with fabulous efficiency. Stylish looks are enhanced with a wide variety of fuel bed and frame options to enable you to make your fire unique to you. Virage can be fitted into a conventional fireplace or can be fitted as a hole in the wall unit. A heat output of 4.6kw and an efficiency of 67% makes the Legend Virage an outstanding choice for an open fronted gas appliance.

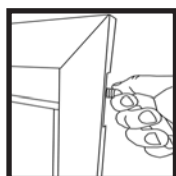


# Options

## CONTROL OPTIONS



manual



slide



remote

## INTERIORS



plain

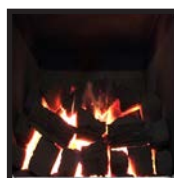
## FUEL BEDS



coal



pebble



ripped coal



modular coal



modular pebble



deluxe pebble

## FRAMES



chrome



brushed



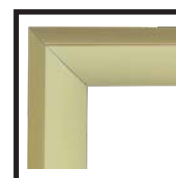
black



profile satin

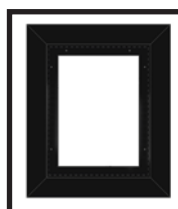


profile bronze

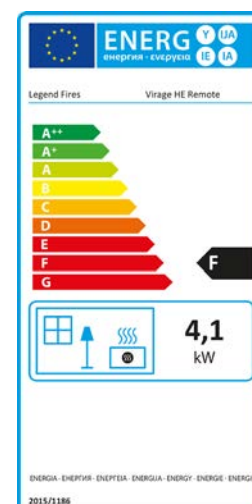
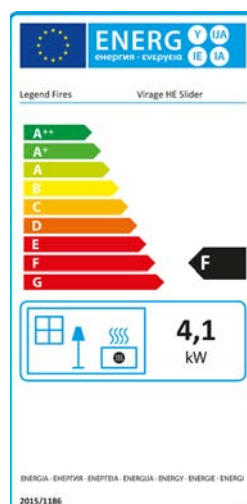
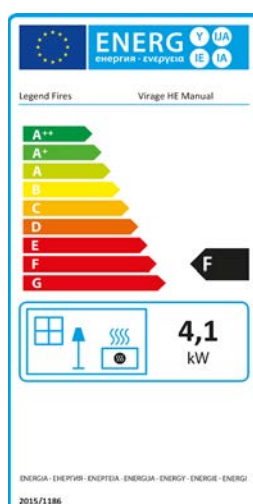


profile brass

## ACCESSORIES



backplate

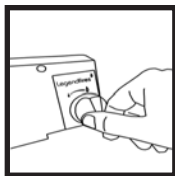




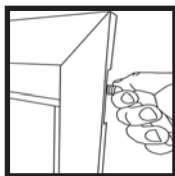
Virage 4-sided//Coals//Profile Satin Frame//Backplate

# Options

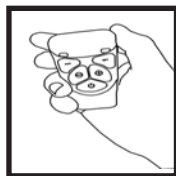
## CONTROL OPTIONS



manual



slide



remote

## INTERIORS

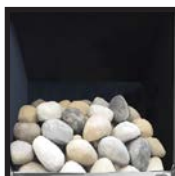


plain

## FUEL BEDS



coal



pebble



modular coal

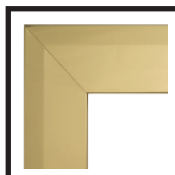


modular pebble



deluxe pebble

## FRAMES



brass



chrome



brushed



black



black/nickel



black/brass



black/chrome



v2 brushed



v2 black



v2 chrome



v2 black nickel



profile satin



profile bronze



profile brass

## FRETS



aviva brass



aviva chrome



aviva black



aviva brushed



aviva black nickel



duet brass



duet chrome

other frets available on request



# Spirit

The Spirit was designed to operate on class 1, class 2 or certain pre-cast flues and therefore is shallower than the Vantage.

However the Spirit still retains its's deep red glowing coals and realistic flame effect. Available in slide, remote and manual control options.



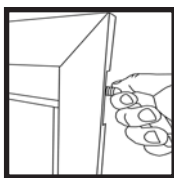
Spirit V2 brushed w/ coals

# Options

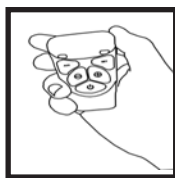
## CONTROL OPTIONS



manual



slide



remote

## INTERIORS



plain



brick

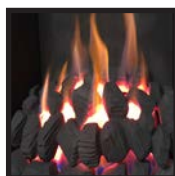
## FUEL BEDS



modular coal

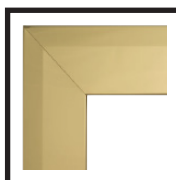


modular pebble



modular ripped  
coal

## FRAMES



brass



chrome



brushed



black



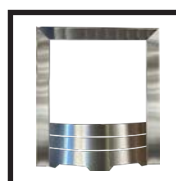
black/nickel\*



black/brass\*



black/chrome\*



v2 brushed\*



v2 black\*



v2 chrome\*



v2 black nickel\*



profile satin\*



profile bronze\*



profile brass\*

## FRETS



aviva brass



aviva chrome



aviva black



aviva brushed\*



aviva black nickel\*



duet brass\*



duet chrome\*

other frets available on request



## Spirit Superslim

Available in a number of finishes and compatible with all pre-cast flue systems, the Spirit Superslim fire has a depth of only 90mm.

However when fitted with a modular coal or pebble fuel bed, the appearance is of a full depth fire. Superslim is available in slide, remote or manual control options.



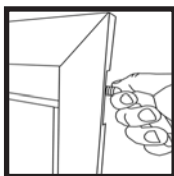
Superslim profile satin coal

# Options

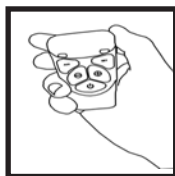
## CONTROL OPTIONS



manual



slide\*



remote

## INTERIORS



plain

## FUEL BEDS

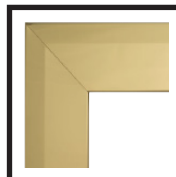


modular coal



modular pebble

## FRAMES



brass



chrome



brushed



black



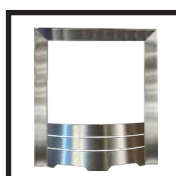
black/nickel\*



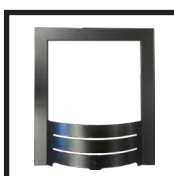
black/brass\*



black/chrome\*



v2 brushed\*



v2 black\*



v2 chrome\*



v2 black nickel\*



profile satin\*



profile bronze\*



profile brass\*

## FRETS



aviva brass



aviva chrome



aviva black



aviva brushed\*



aviva black nickel\*

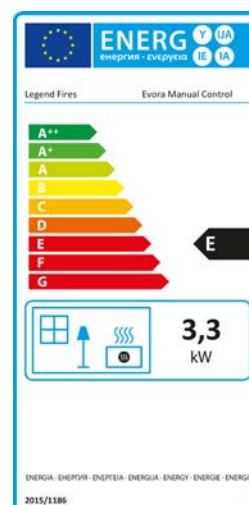
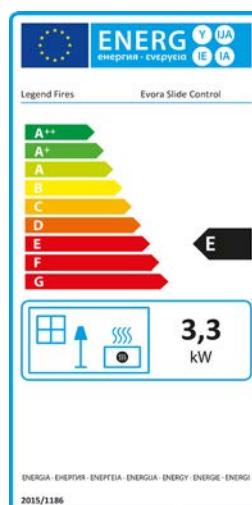
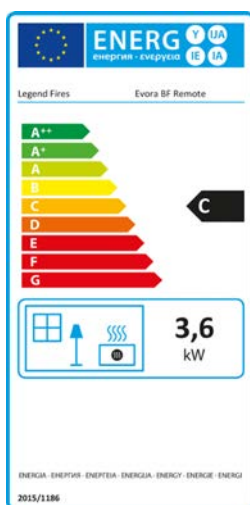
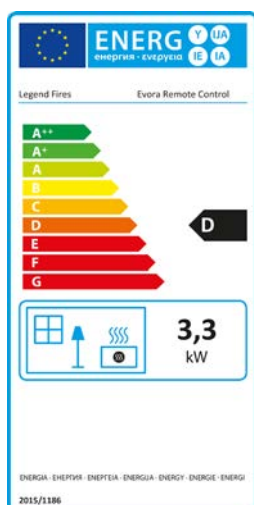
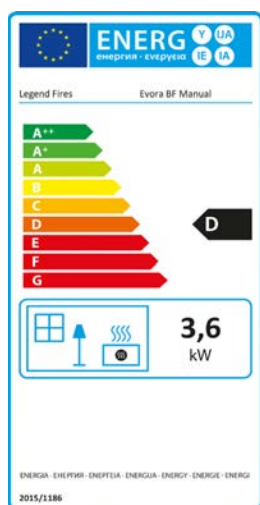


duet brass\*



duet chrome\*

other frets available on request





# Evora

The Evora provides a superb efficiency of 80.1% and has an efficiency classification 1. A ground breaking modular fuel bed in either coal or beach coal can be specified to ensure a consistent flame pattern and ease of maintenance.

The Evora is available as a Conventional Flued or Balanced Flued appliance.



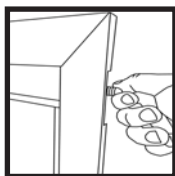
Evora chrome frame w/ coal

# Options

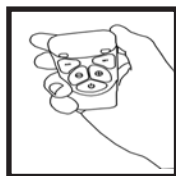
## CONTROL OPTIONS



manual



slide\*



remote

## INTERIORS

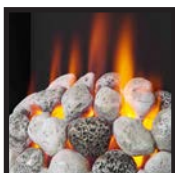


plain

## FUEL BEDS



modular coal



modular pebble

## FRAMES



chrome



brushed



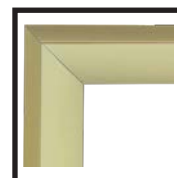
black



profile satin

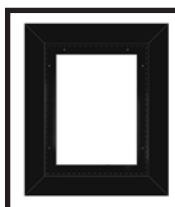


profile bronze

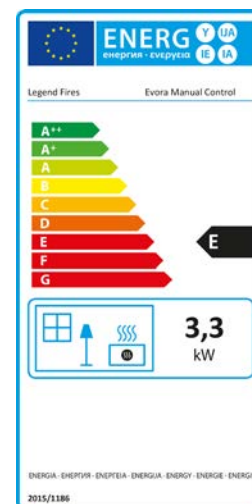
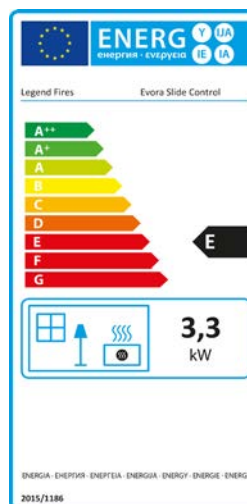
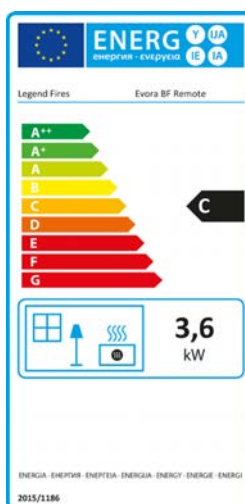
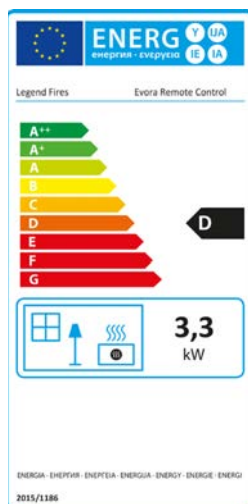
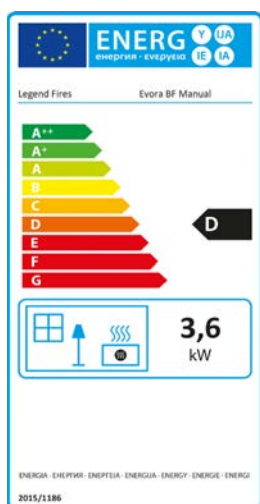


profile brass

## ACCESSORIES



backplate





Evora 4-sided//Black Frame//Coals//Backplate

# Options

## CONTROL OPTIONS



manual

## FUEL BEDS



coal



pebble



logs

## FRAMES



v2 brushed\*



v2 black\*

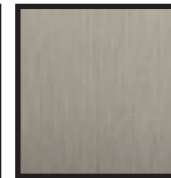


v2 chrome\*

## ACCESSORIES



chrome matching  
canopy



brushed matching  
canopy



black matching  
canopy



# Wraith

Introducing the Wraith. A new Legend in the ever expanding electric fires market.

Designed in a clean and contemporary style the Wraith will compliment any interior. The Wraith has been designed with a variety of fuel bed and frame options so you can configure to suit your unique style.



Wraith//Brushed Frame//Matching Canopy//Logs

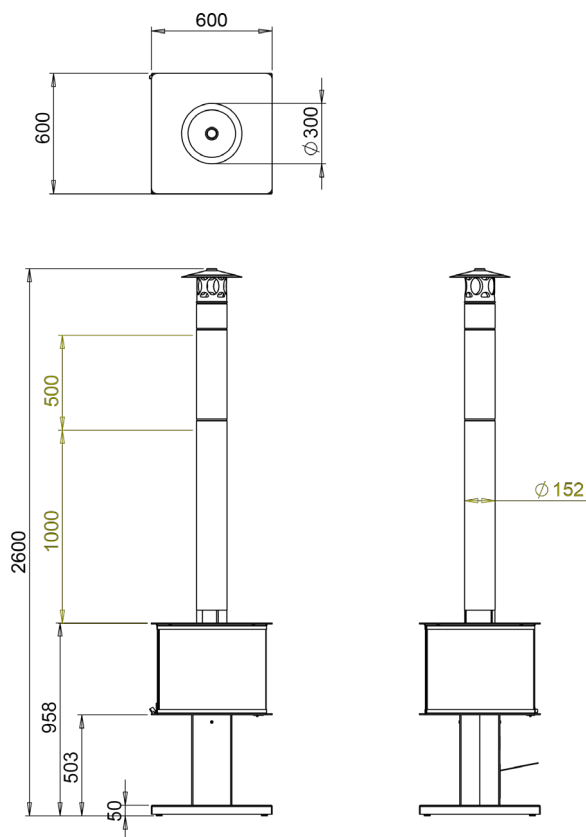
# The Garden Cube

Hello long Summer nights and making the most of your garden in the Winter

Make the most of your garden whatever the weather with our stunning wood burning outdoor patio & garden heater. The warmth of real flames radiate from all 4 sides of the Garden Cube and the view is captivating from all angles.

Featuring a contemporary glass encased cabinet with extended chimney, the Garden Cube is designed with performance as well as beauty in mind, creating peace of mind by offering a lot safer alternative to traditional fire pits or chimineas. The extended chimney draws smoke up and away from the area you sit, so you no longer have to worry about that powerful smoke scent lingering in your hair and skin for days. Better still, an ingenious ash collection tray ensures there's no mess.

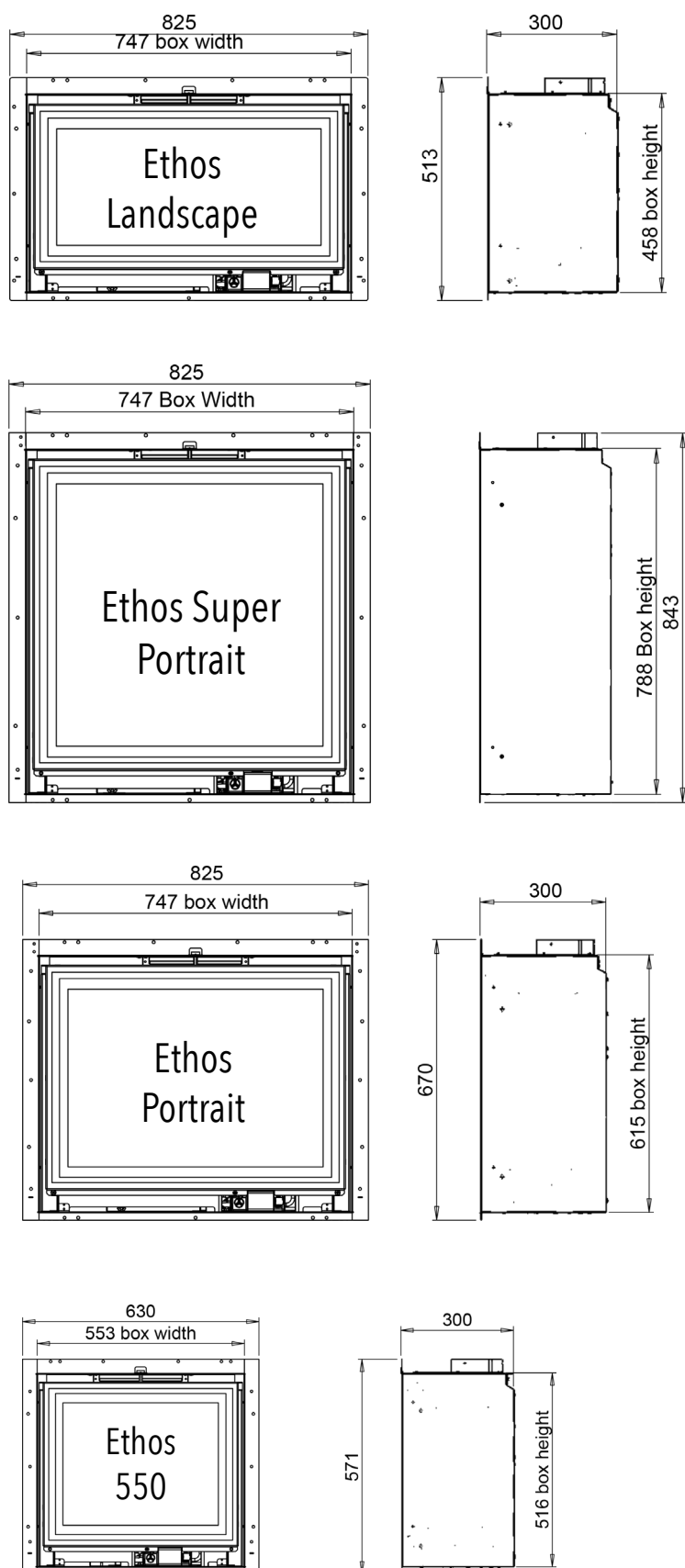
A robust and fully powder coated steel body guarantees the Garden Cube can stand the elements outdoors allowing you to enjoy season after season with minimal effort. The Garden Halo is designed, manufactured and assembled at our headquarters based in Lancashire, UK.



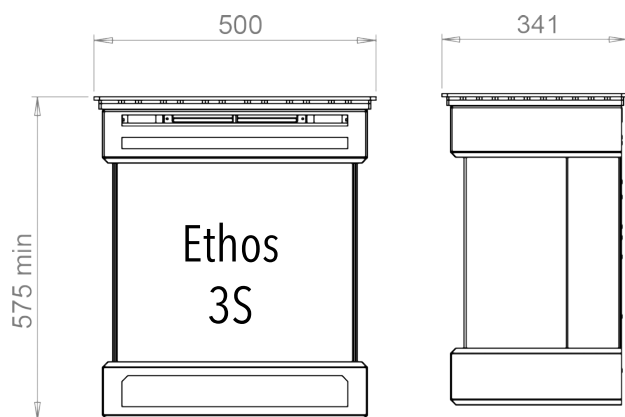
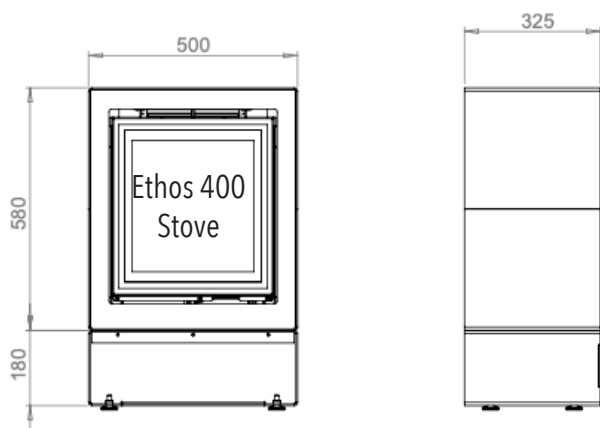
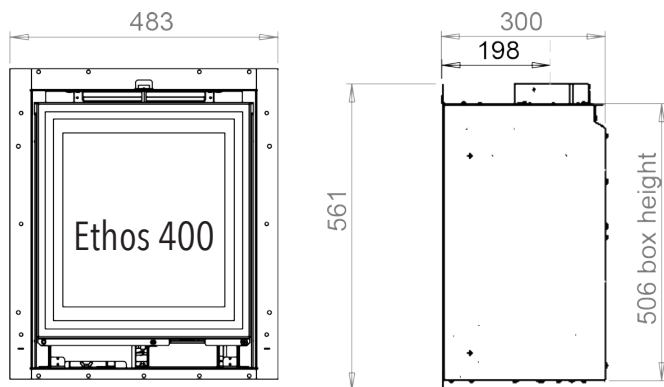


# Technical Specifications

## Ethos range

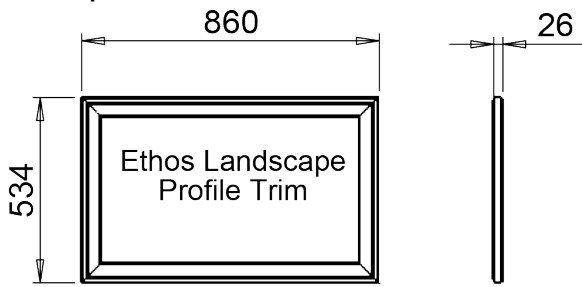




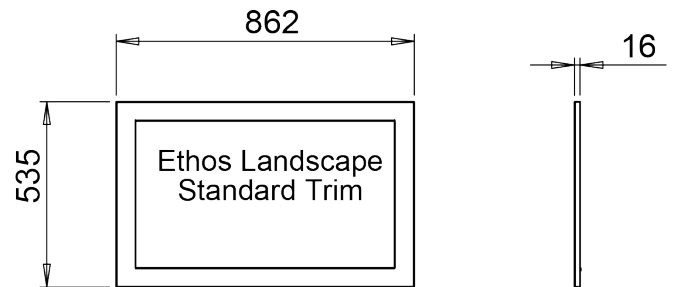


# Technical Specifications

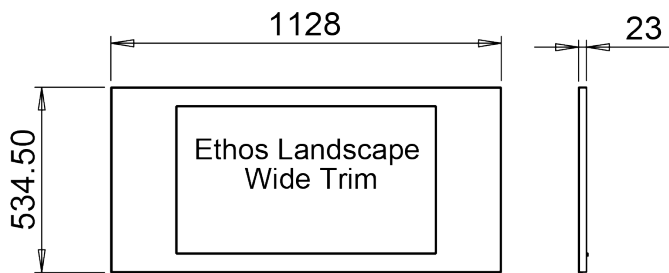
## Ethos Options



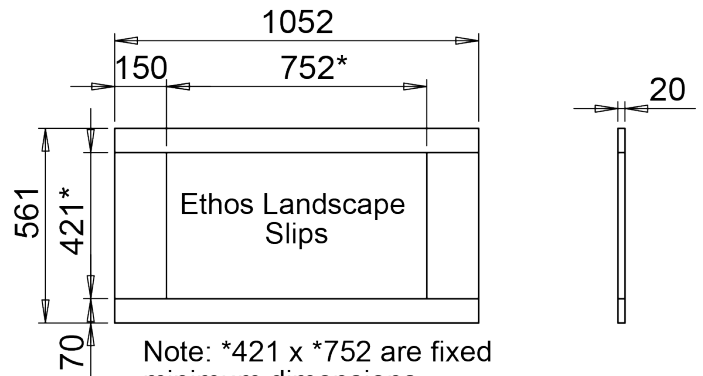
Bronze, Satin / Silver & Black / Silver



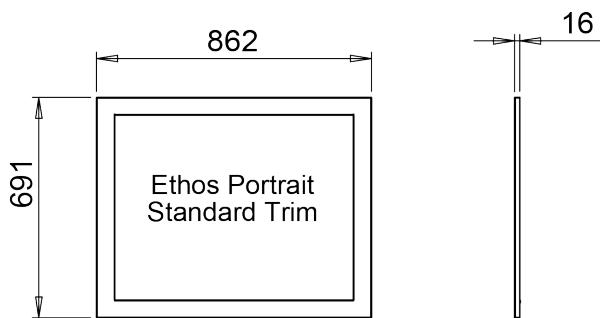
Black



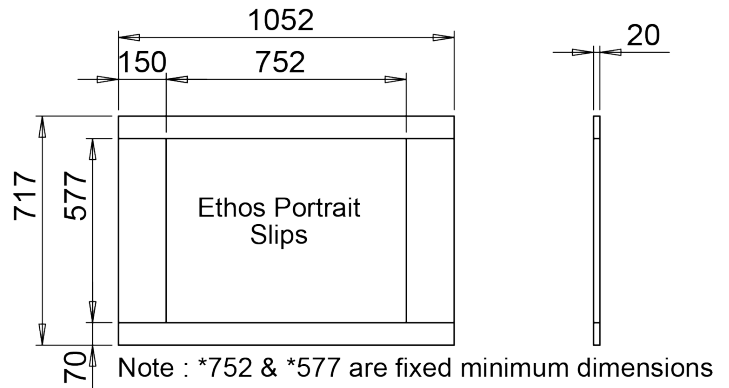
Black



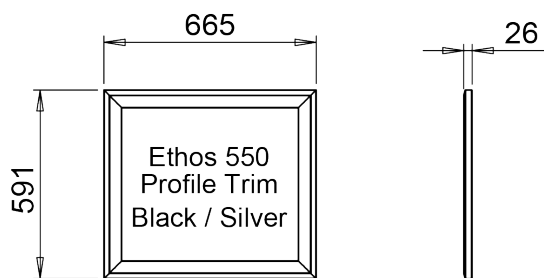
Note: \*421 x \*752 are fixed minimum dimensions



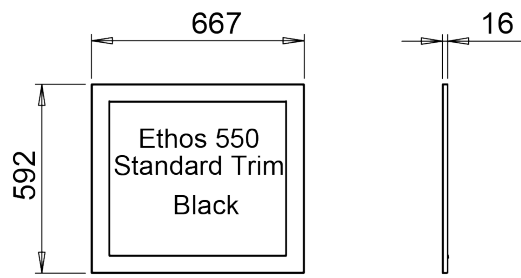
Black



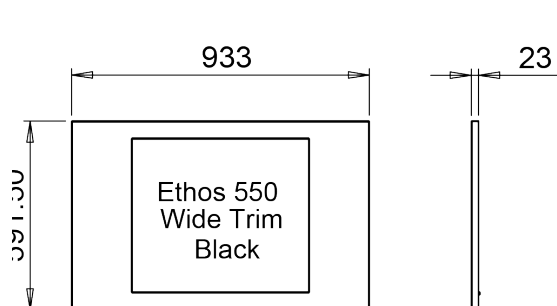
Note : \*752 & \*577 are fixed minimum dimensions



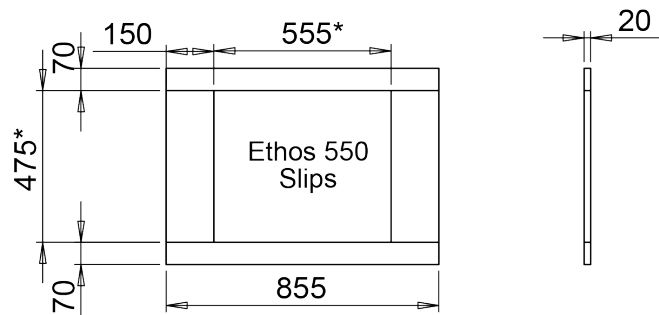
Black / Silver



Black

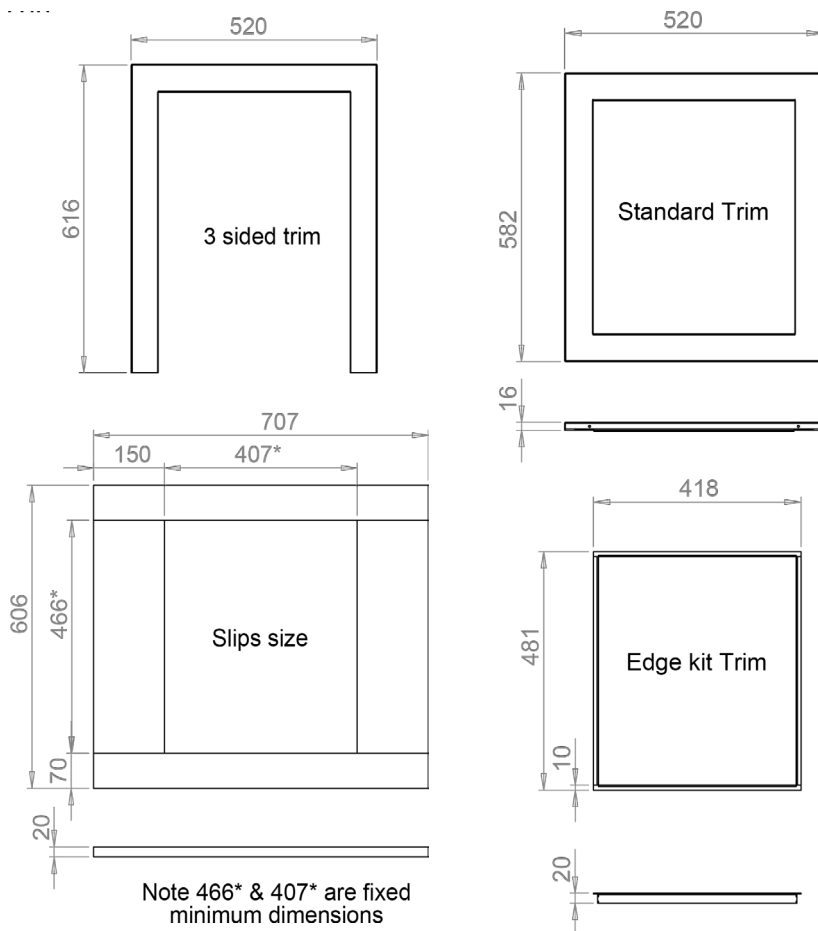


Black



Ethos 550 Slips

# Ethos 400



Product Ethos	Landscape	Portrait	SP	550	400	400 Stove	3S stove
Usefull Efficiency	87.20%	82.30%	78%	80.60%	80.90%	80.90%	84%
Flue Types							
Class I	Yes	Yes	Yes	Yes	Yes	Yes	Yes
Class II	Yes	Yes	Yes	Yes	Yes	Yes	Yes
Precast Flue *	No	No	No	No	No	No	No
Controls							
Remote Control	Yes	Yes	Yes	Yes	Yes	Yes	Yes
Heat Output KW							
High	4.7	5.5	5.2	4	4	4	4.2
Low	1.9	1.8	1.7	1.4	1.4	1.4	1.3
Heat Input KW							
High	6.0	7.4	7.4	5.5	5.5	5.5	5.5
Low	2.5	2.5	2.5	1.9	1.9	1.9	1.9
Gas Type							
Natural Gas	Yes	Yes	Yes	Yes	Yes	Yes	Yes

# Technical Specifications

Legend range



Black brick effect



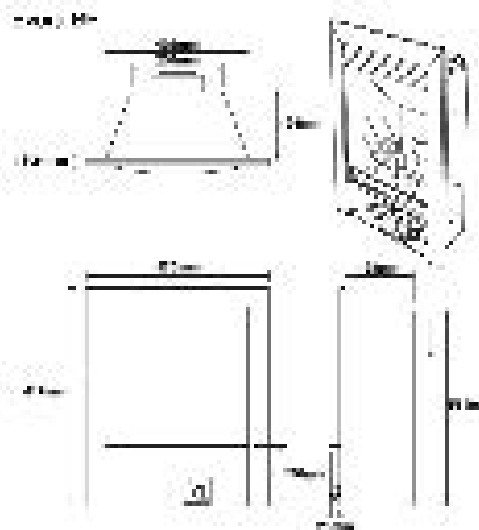
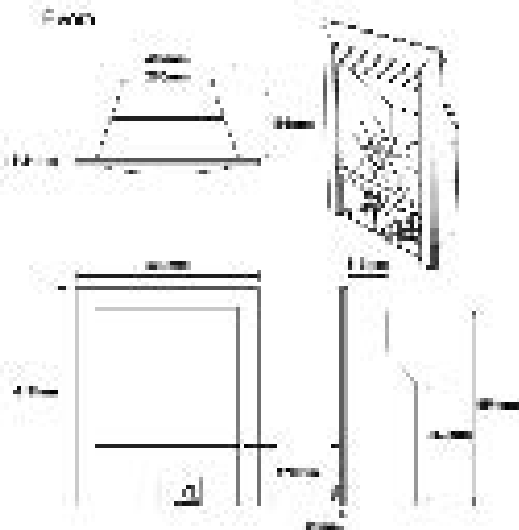
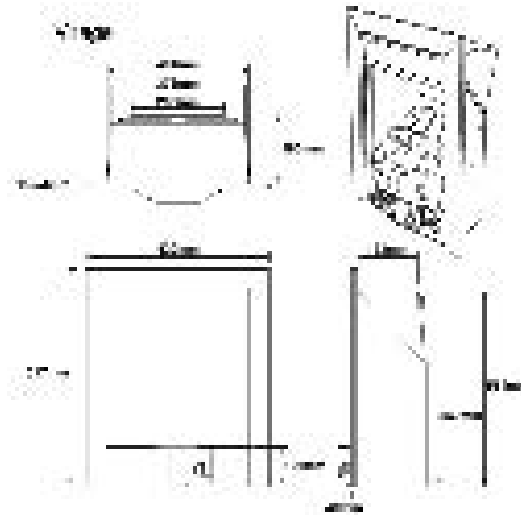
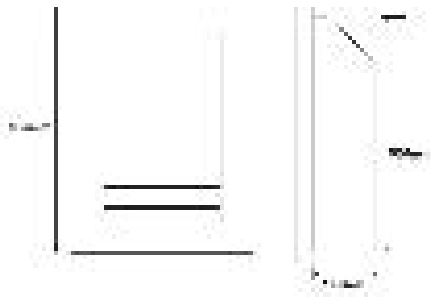
Plain charcoal



Ribbed charcoal



## Vantage as Standard



Product	16" Vantage	18" Vantage	22" Vantage	16" Low Lintel Vantage	Virage	Evora CF	Evora BF	Spirit	Spirit Superlim
<b>Flue Types</b>									
Class I	Yes	Yes	Yes	Yes	Yes	Yes	NA	Yes	Yes
Class II	Yes	No	No	Yes	Yes	Yes	NA	Yes	Yes
Precast Flue	No	No	No	No	No	Yes	NA	Yes	Yes
Balanced Flue	No	No	No	No	No	No	Yes	No	No
<b>Heat Output KW</b>									
High	-	-	-	-	4.1	3.3	3.6	-	-
Low	-	-	-	-	2.5	1.8	1.1	-	-
<b>Heat Input KW gross</b>									
High	6.9	9.6	13	6.9	6.9	4.6	4.5	6.2	5.5
Low	4.2	4.5	5.0	4.2	4.2	2.5	2.5	4	3.6
<b>Gas Type</b>									
Natural Gas	Yes	Yes	Yes	Yes	Yes	Yes	Yes	Yes	Yes
Propane (LPG)	Yes	No	No	Yes	No	No	No	No	No

Vantage/Spirit/Superlim figures quoted are indicative.

No Additional Ventilation is usually required with the above appliances that are rated at less than 7kw.

We recommend that a fireguard be used where children, the elderly and infirm are present Legend Fires Policy is one of constant development.

We reserve the right to change the design and specification of our products without formal notice.

All Legend Fires products are fitted with Oxygen Depletion sensing pilots and Flame Supervision Device as Standard.

We recommend that all Legend Products are installed and annually serviced by Gas Safe Registered Installers.







Legend Fires Ltd

Unit 404, Glendfield Business Centre, Blakewater Road,  
Blackburn, Lancashire, BB1 5QH

T: 01254 695244 E: [info@legend-fires.com](mailto:info@legend-fires.com) W: [www.legend-fires.com](http://www.legend-fires.com)

 [@legendfires](https://www.instagram.com/legendfires)  [@legendfires](https://www.twitter.com/legendfires)  [legendfires](https://www.facebook.com/legendfires)